



Ebells



Ebell Club of Fullerton | PO Box 10145 Fullerton, CA 92838 | www.EbellClubofFullerton.com
Email: media.ebellfullerton@gmail.com [f](https://www.facebook.com/EbellClubofFullerton) [i](https://www.instagram.com/EbellClubofFullerton) @EbellClubofFullerton

SUMMER 2025

President: Mary Sprague
Editor: Michelle Reynoso
EbellEchoNewsletter@gmail.com

MEETING CALENDAR

**Next General Meeting
SEPTEMBER 5, 2025**

ELKS LODGE

1400 Elks View Lane, Fullerton
10:30 Social / 11:00 Meeting
Luncheon Cost - \$24.00

MENU (TBA)

RSVP with Reservation
Chairman Ethel Lee Hainline
714.899.9382

Deadline to RSVP for the
General Meeting Luncheon is the
Friday before the meeting

Attention Members: If you have a
standing lunch reservation, and
do not cancel by the deadline,
you will be charged for the lunch.

**EVENING MEETING
SEPTEMBER 16 - 7:00 pm
ELKS LODGE**

President's Message: Mary Sprague

WELCOME TO THE NEW ADMINISTRATION.

It seems a little strange to be writing a message welcoming everyone when we are getting ready to "go dark" for the next two months. There will be no official meetings until September, but we will have some opportunities to get together. While we don't officially meet many of the officers and chairmen will be working helping to make plans and research projects for the upcoming year.

I would like to thank all the members who have volunteered to be officers and chairmen. We all know the saying "it takes a village" but for the Club to run effectively it takes all the members to be involved. Our new yearbook will be available at the September meetings with all the Club information regarding meeting dates, programs, member information and more.

It is never too late to volunteer, if you are interested in helping in any way, please contact me. One of the MOST IMPORTANT ways you can assist the Ebell Club is RECRUIT A NEW MEMBER. If each of us recruits a new member we can double in size, but don't stop there, RECRUIT TWO NEW MEMBERS. Remember, MEMBERSHIP is every member's responsibility.

Hope you all enjoy your summer break and look forward to seeing everyone in September, if not before.

Mary

LEARN MORE ABOUT OUR ORGANIZATION!

Orange District > cfwcorangedistrict.com
California Federation of Women's Clubs > www.cfwc.org
General Federation of Women's Clubs > www.gfwc.org

EBELL CLUB OF FULLERTON 2025- 26 BOARD OFFICERS



**President
Mary Sprague**



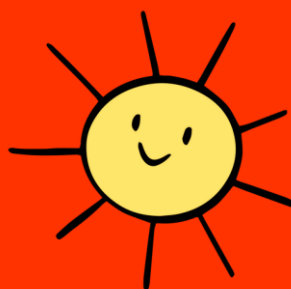
**1st VP – Dean
Christine Truxaw**



**2nd VP- Membership
Ethel Hainline &
Barbara Quintana**



**3rd VP – Programs
Suzanne Photakis**



**4th VP – Events
Hannah Sprague**



**Secretary
JoAnne Carmony**



**Treasurer
Bev Nihei**



**Parliamentarian
Libby Buckley**



JULY BIRTHDAYS

16 Melanie Bakken

17 Mercedes Szarka

AUGUST BIRTHDAYS

9 Libby Buckley

12 Cynthia Gil-Santillan

20 JoAnne Carmony

PLEASE COLLECT PULL TABS

The Ronald McDonald Pull Tabs Program is a recycling program that helps raise funds for Ronald McDonald House Charities. To participate in the program, we need to:

- Collect aluminum pull tabs from containers like soda, soup, pet food cans, etc.
- It takes approximately 1,128 pop tabs to equal one pound.

The program brings in an average of \$6,000 each year.



Meeting Recap

On June 17, 2025, Michael Despars from Fullerton Visual & Performing Arts and Stephannie Vicuna, Chief Education Officer at the Muckenthaler (ie: the Muck) shared with the Evening Group about the different free programs the Muck has during the summertime.



They are trying to build a partnership with the community by offering the “Anti Camp” program. It’s a free program for teens ages 13-17 where the student studies with a master artist. There are also “Smart Sundays”, where there are 6 different Summer Movement & Art programs for disabled students, using different thinking methods for students ranging from autism to depression.

At the end of the program, our Club donated a check to the Muck.



Happy Birthday to some of our June and July ladies from the General Meeting



Loretta McLaughlin is moving to Seal Beach. Wishing you all the best!



Our members attending the last General Meeting before our summer break



Club Updates & Upcoming Activities

In our last issue, we still had 3 Scholarships to be awarded. Here are the recipients from Troy and Sonora High School. Unfortunately, we were unable to get a photo of the Buena Park recipient.



Troy High School



Sonora High School



Our Club donated \$200 to Homeless Intervention Services of Orange County (HIS-OC).

They used our donation to purchase pillows for their shelter. In the photo are Virgie, the Lead Site Coordinator and Josie, the Case Manager with some of the new pillows.

Upcoming Volunteer Information

Volunteers Needed – August 23rd

Call for volunteers for the City of Fullerton Day of Play Event!

It has been rescheduled to Saturday, August 23 from 11am-3pm at the Hunt Branch Library. The city is taking care of the event, but we would like Ebell Club members to be at our table interacting with attendees, sharing what the Club does, and inviting those interested to join.

Volunteers can sign up with Cynthia Gil-Santillan.

Please email cynthiagil@hotmail.com or call 714-235-1010.



EBELL CLUB OF FULLERTON

2025-2026 Meeting Schedule

(During holidays, the date is subject to change)

	General Meeting	Evening Meeting	Board Meeting
July / August	1 st Friday	2 nd Tuesday	4 th Wednesday
September	Break	Break	Break
	5	9	24



Find us on social media
Ebell Club of Fullerton



Facebook and



Instagram



SHARE YOUR VIDEO OR PHOTOS ON OUR CLUB'S GOOGLE DRIVE

If you have photos or videos to share, Hannah created a Google drive for our Club. When taking a video, please take it vertically (up and down) so we can use it on social media.

You can gain access to the Google Drive via an invitation or using the link that was sent out in an earlier email. If you cannot find the email, Email Hannah at media.ebellfullerton@gmail.com for the link.

After you have uploaded the photo or video, please email Hannah or Michelle to notify us there's media in the drive.

If this is too complicated to upload, you can still text Michelle Reynoso or email the Ebell Echo Newsletter.

Deadline to submit for the next newsletter is August 15



EBELL CLUB OF FULLERTON
PO Box 10145 Fullerton, CA 92838